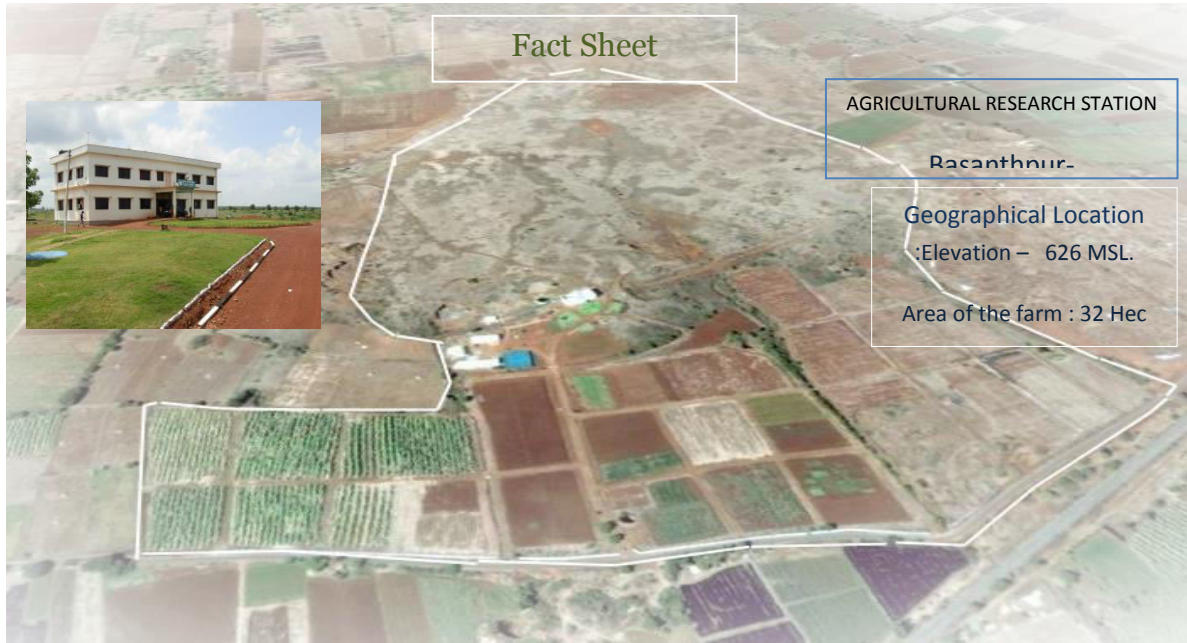


Name of the Research Station : Agricultural Research Station, Basanthpur



2. Geographical Layout

1.	Geographical position	:	Latitude: 17° 47' 52.55" North Longitude: 77° 32' 37.77" East
2.	Total area (ha)		32 .0 ha
3	Cultivable area		12.08 ha

3. YEAR OF ESTABLISHMENT : January, 2007

4. MANDATE

- Evaluation and identification of varieties of sugarcane and cotton
- Introduction of new crop or varieties and testing suitable techniques for the district
- Research on farming system with main crops of sugarcane and wheat
- To develop package for seed to seed mechanization

5. Significant achievements

1. Developed budchip technology in sugarcane to reduce cost and time involved, and produce high yields
2. Identified and categorized sugarcane root traits for 12 genotypes to mitigate stress.
3. Identified Co 95020 as thermo-tolerant and drought resistant, high yielding and fiber rich sugarcane variety useful for co-generation.
4. Developed a technology for improvement in germination and profuse tillering habit with 0.1% 2 chloro ethyl phosphonic acid and 0.2% CaCl_2 at low temperatures.
5. Identified high remunerative early summer intercrops for sugarcane.
6. Developed high density planting method, and joint row planting for mechanized cultivation in sugarcane.
7. Developed a mechanized module for seed to seed mechanization in sugarcane.
8. Identified irrigated dry wheat varieties suitable for CTZ.
9. Identified high sucrose and profuse tillering varieties suitable at wider spacing conditions.